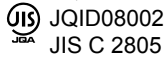
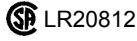
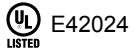
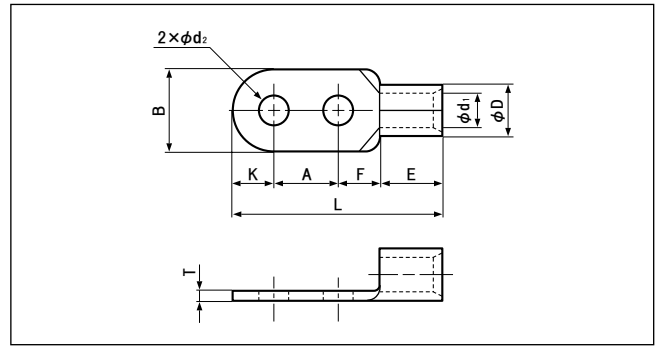


ニツ穴端子(RD形)

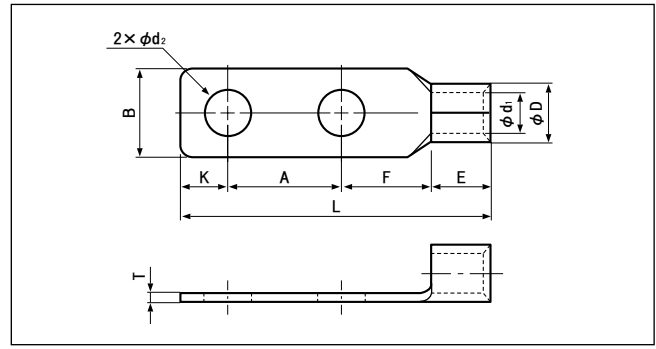


形番	規格	寸法(mm)										適用電線範囲			適用圧着工具		1箱 入数 (個)			
		φd ₂	B	L	F	A	K	E	φD	φd ₁	T	単線(mm)	撚線(mm ²)	AWG(#)	空気圧式	油圧式				
RD38-0 (10)		—			—	—	—													
RD38-10		11.0	22.0	84.0	28.0	32.0		14.0	13.3	9.4	1.8	5.81	26.66	2	YA-5	YPT-60N, YPT-150-1 BCT-860L, BCT-8150L (本体) YF-1, E-4, EP-1 (ヘッド) YET-60-1 YET-150-1	50			
RD38-12		14.0			20.0	40.0	10.0					7.34	42.42							
RD60-10		11.0	22.0	78.0	17.0	32.0								1/0	YA-5	YPT-60N, YPT-150-1 BCT-860L, BCT-8150L (本体) YF-1, E-4, EP-1 (ヘッド) YET-60-1 YET-150-1, YET-300-1 YET-300N	50			
RD60-12		14.0		89.0	20.0		40.0	11.0	18.0	15.5	11.4	2.0	7.34					42.42		
RD60-14		16.0	32.0	95.0	21.0		16.0					8.26	60.57							
RD70-10		11.0	24.0	80.0	17.0	32.0						8.26	60.57	2/0		YPT-150-1 BCT-8150L (本体) YF-1 E-4, EP-1 (ヘッド) YET-150-1 YET-300-1 YET-300N	25			
RD70-12		14.0		91.0	20.0	40.0	12.0	19.0	17.5	13.3	2.0	9.27	76.28							
RD80-10		11.0	27.0	82.5	32.0	32.0						9.27	76.28	3/0						
RD80-12		14.0		94.2	40.0	40.0	13.5	20.0	19.5	14.5	2.3	10.41	96.3							
RD100-0 (12)		—		95.5	—	—	—													
RD100-10		11.0	28.5	84.3	17.0	32.0						10.41	96.3	4/0	—					
RD100-12		14.0		95.5	20.2		40.0	14.3	21.0	22.3	16.4	2.6	11.68					117.2		
RD100-14		16.0	32.0	98.0	21.0		16.0					11.68	117.2							
RD150-0		—		—	—	—	—													
RD150-12		14.0	36.0	106.0	21.0	40.0	18.0	27.0	26.5	19.5	3.2	11.68	117.2	250/ 300MCM						
RD150-14		16.0			13.8	152.05														
RD180-12		14.0	38.5	108.8	21.0	40.0	19.3	28.5	28.5	21.0	3.5	13.8	152.05	350MCM	—	(本体) YF-1, E-4 (ヘッド) YET-300-1 YET-300N	20			
RD180-14		16.0			~ 15.6	~ 192.60														
RD200-0		—		—	—	—	—													
RD200-12		14.0	44.0	116.5	23.0	40.0	22.0	31.5	32.7	24.0	4.0	15.6	192.60	400MCM	—		10			
RD200-14		16.0			17.5	242.27														
RD250-12		14.0	44.0	116.5	23.0	40.0	22.0	31.5	35.6	26.0	4.5	—	250	—	—	(本体) YF-1, E-4 (ヘッド) YET-300-1	10			
RD250-14		16.0																		
RD325-0		—		—	—	—	—													
RD325-12		14.0	50.5	123.8	23.0	40.0	25.3	35.5	37.6	28.0	4.5	17.5	242.27	600/ 650MCM	—	(本体) YF-1, E-4 (ヘッド) YET-300-1, YET-300N	5			
RD325-14		16.0			20.3	325														

注1) ニツ穴端子にはJR(車両)用タイプもありますので参照ください。

注2) 本製品の中には多少納期を要するものもあります。

ニツ穴端子(NTT形)



形番	寸法(mm)										適用電線範囲			適用圧着工具			1箱 入数 (個)		
	ød ₂	B	L	F	A	K	E	øD	ød ₁	T	単線(mm)	撚線(mm ²)	AWG(#)	手動	空気圧式	油圧式			
5.5-D-4	4.3	10.0	34.7	10.9	12.0	5.0	6.8	5.5	3.4	1.0	1.82	2.63	12	YHT-2210	YA-1, YA-2 YAT-1A YAT-2A YAD-1A YAD-2A, YA-4 YAT-4A YAD-4A	BCT-0514L	500		
5.5-D-5	5.3		34.2								2.89	6.64	10						
8-D-5	5.3	15.0	38.0	11.5	12.0	6.0	8.5	7.1	4.5	1.2	2.89	6.64	8	YHT-8S	YA-4 YA-5 YAT-4A YAD-4A	YPT-60N YPT-150-1 BCT-0514L BCT-860L BCT-8150L (本体)YF-1, E-4, EP-1 (ヘッド) YET-60-1 YET-150-1	200		
8-D-6	6.4										3.65	10.52						6	
8-D-8	8.4										22.0	66.5							17.0
14-D-5	5.3	22.0	48.0	14.5	16.0	7.0	12.0	11.5	7.7	1.8	4.62	16.78	4	—	YA-5	YPT-60N YPT-150-1 BCT-860L BCT-8150L (本体) YF-1, E-4, EP-1 (ヘッド) YET-60-1 YET-150-1	100		
14-D-6	6.4										5.81	26.66						2	
14-D-8	8.4										7.34	42.42							100
14-D-10	10.5										5.81	26.66						7.34	
22-D-5	5.3	22.0	49.0	14.0	16.0	7.0	14.0	13.3	9.4	1.8	5.81	26.66	2	—	YA-5	YPT-60N, YPT-150-1 BCT-860L, BCT-8150L (本体) YF-1, E-4, EP-1 (ヘッド) YET-60-1 YET-150-1 YET-300-1, YET-300N	50		
22-D-6	6.4										7.34	42.42						2	
22-D-8	8.4										5.81	26.66							100
22-D-10	10.5										7.34	42.42						5.81	
38-D-5	5.3										18.0	52.0						15.0	16.0
38-D-6	6.4	7.34	42.42	100															
38-D-8	8.4	5.81	26.66		50														
38-D-10	10.5	7.34	42.42	5.81		26.66													
60-D-12	14.0	22.0	89.5	16.5	40.0	15.0	18.0	15.5	11.4	2.0	7.34 8.26	42.42 60.57	1/0	—	—	YPT-60N, YPT-150-1 BCT-860L, BCT-8150L (本体) YF-1, E-4, EP-1 (ヘッド) YET-60-1 YET-150-1 YET-300-1, YET-300N	50		
100-D-10	11.0	28.5	88.7	21.0	32.0	15.0	20.7	22.3	16.4	2.7	10.41	96.3	4/0	—	—	YPT-150-1 BCT-8150L (本体) YF-1, E-4, EP-1 (ヘッド) YET-150-1 YET-300-1 YET-300N	25		
100-D-12	14.0		95.0	20.0	40.0		20.0				11.68	117.2							
150-D-12	14.0	36.0	106.0	21.0	40.0	18.0	27.0	26.5	19.5	3.3	11.68 13.8	117.2 152.05	250/ 300MCM	—	—	YPT-150-1 YET-150-1 YET-300-1 YET-300N	20		
200-D-12	14.0	43.5	115.7	25.0	40.0	18.0	32.7	32.7	24.0	4.0	15.6 17.5	192.60 242.27	400MCM	—	—	(本体) YF-1, E-4 (ヘッド) YET-300-1 YET-300N	10		
325-D-12	14.0	50.5	124.0	30.5	40.0	18.0	35.5	37.6	28.0	4.5	17.5 20.3	242.27 325	600/ 650MCM	—	—	YET-300-1 YET-300N	5		

注) 本製品の中には多少納期を要するものもあります。